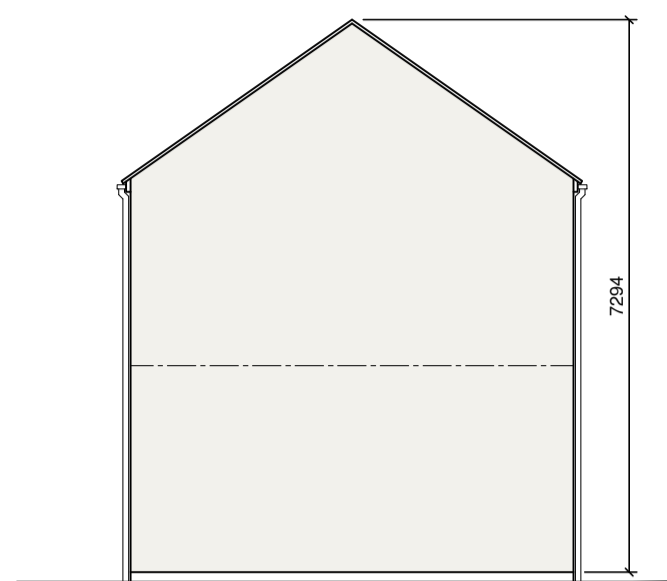




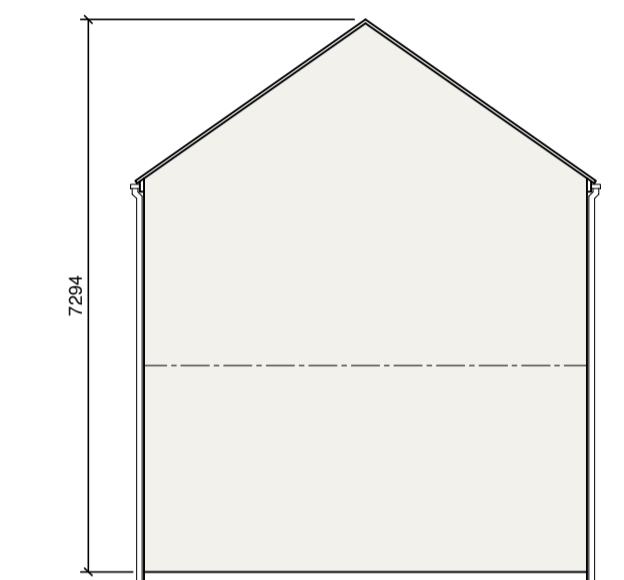
Front Elevation



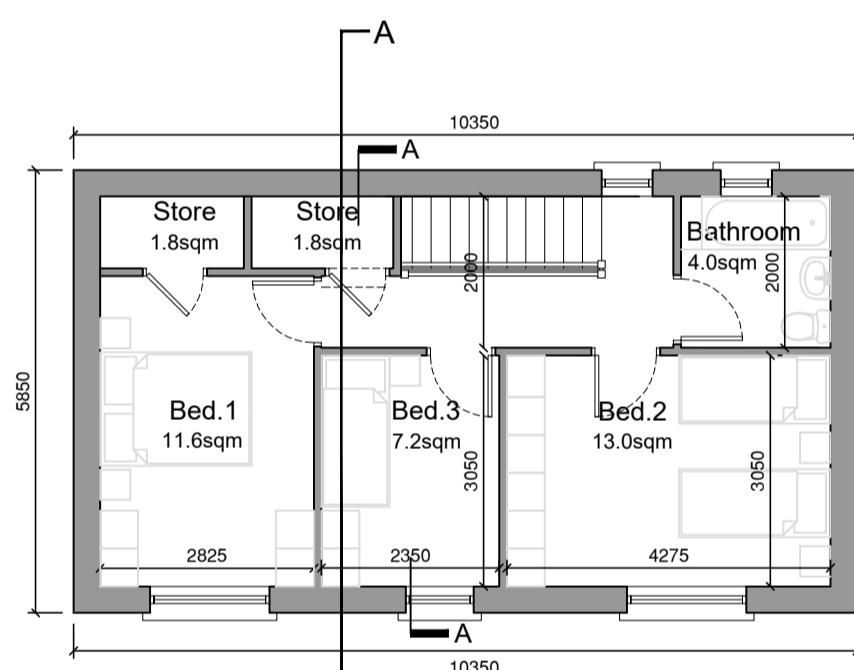
Side Elevation



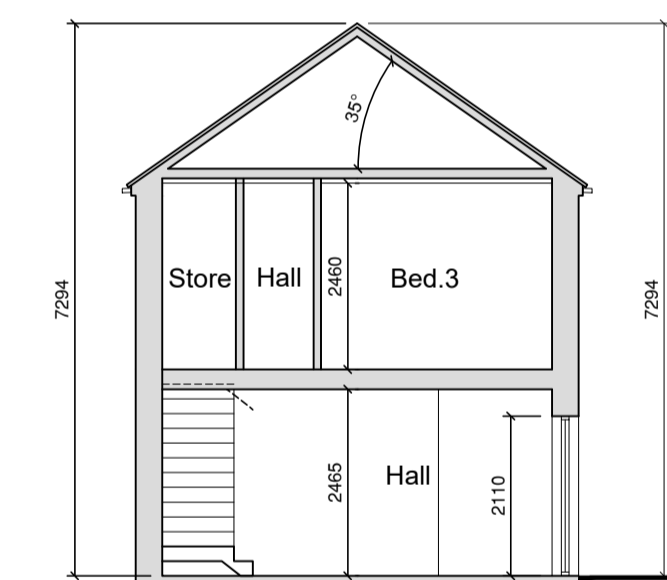
Rear Elevation



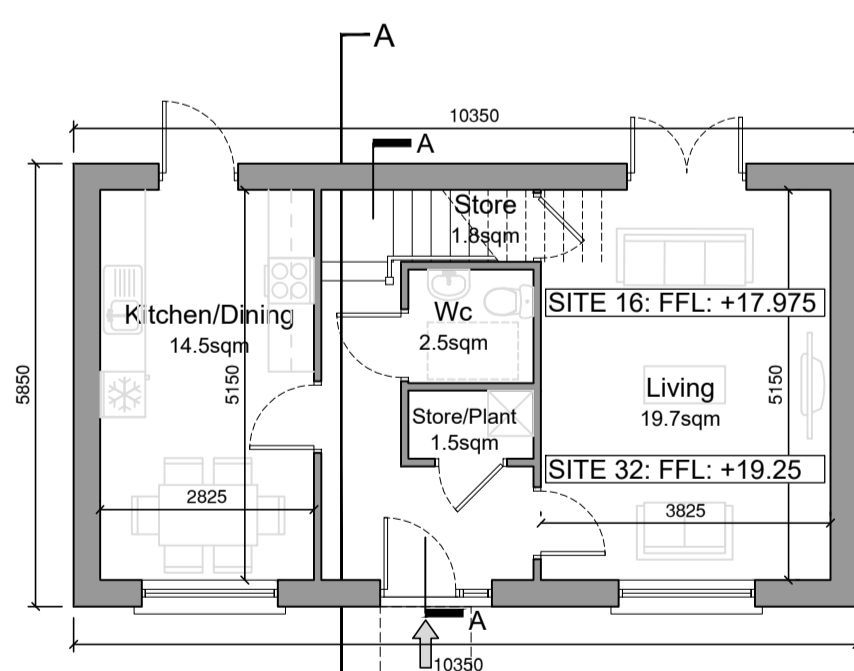
Side Elevation



First Floor Plan



Section A-A



Ground Floor Plan



House Type 1

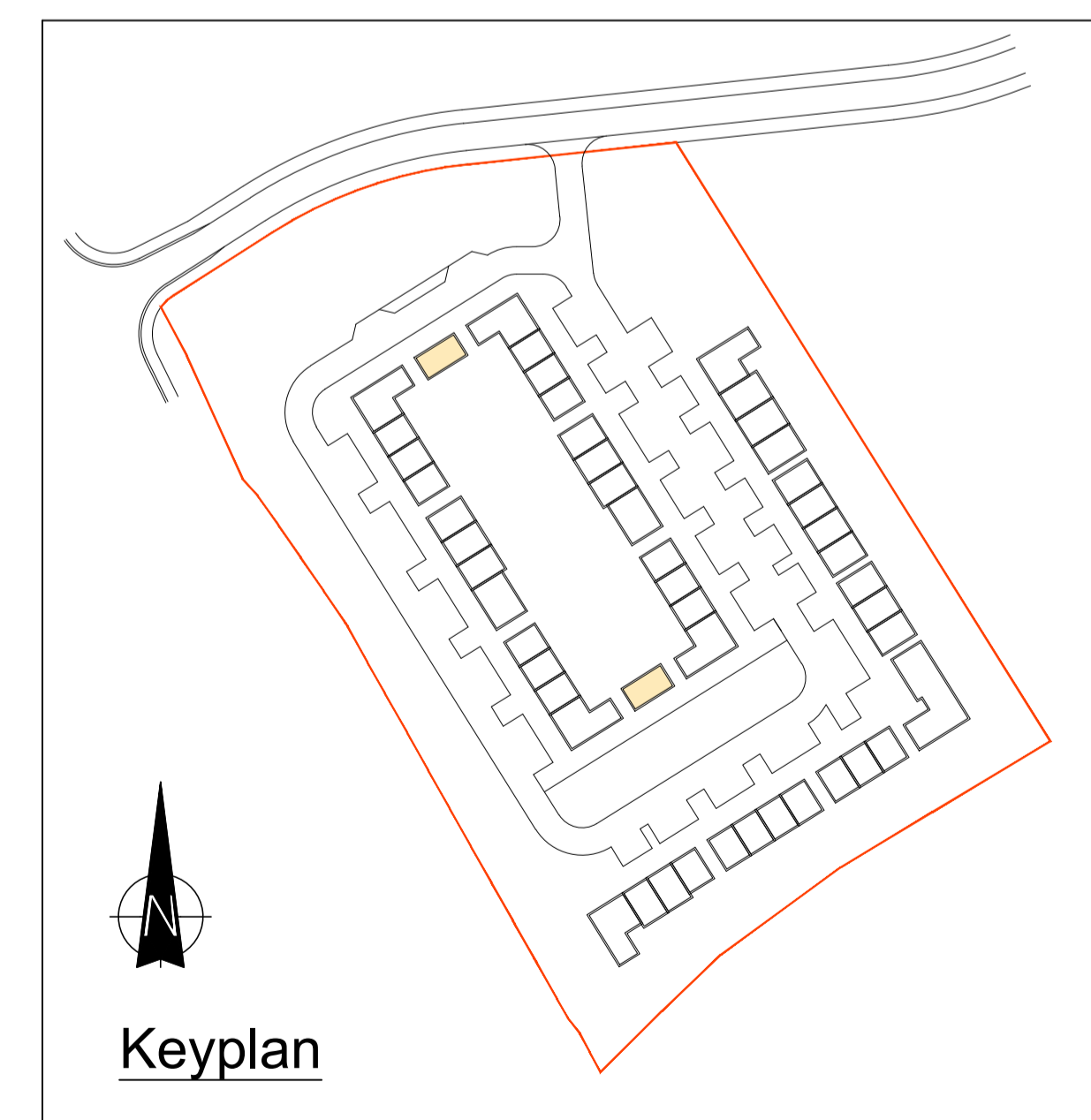
Quality Housing for Sustainable Communities Standards

3 Bedroom / 5 Person House (2 Storey) Areas:					
	Target Gross Floor Areas (m ²)	Min-Main Living Room (m ²)	Aggregate Living Area (m ²)	Aggregate Bedroom Area (m ²)	Storage (m ²)
Required	92 sqm	13 sqm	34 sqm	32 sqm	5 sqm
Provided	99.4sqm	19.7 sqm	34.2sqm	31.8 sqm	5.4 sqm

3 Bedroom / 5 Person (2 Storey) Widths:					
	Single Bedroom (m)	Double Bedroom (m)	Living Rm [1 Bed] (m)	Living Rm [2 Bed] (m)	Living Rm [3 Bed] (m)
Required	2.1m	2.8m	3.3m	3.6m	3.8m
Provided	2.35 m	2.825 m	-	-	3.825 m

External Finishes Schedule

Roof: Blue/Black Fibre cement Slate
 Walls: White External Render - Smooth/dashed
 Brick detail at Entrances
 Windows & Doors: Grey AluClad
 Rain Water Goods: Black uPVC



Keyplan

NOTES

REVISION	DATE	DESCRIPTION	BY
-	-	-	-
-	-	-	-
-	-	-	-
-	-	-	-
-	-	-	-
-	-	-	-
-	-	-	-

Do not scale this drawing. All dimensions in millimetres. Written dimensions to be checked on site. Electronic issue to be confirmed by paper copy only.